

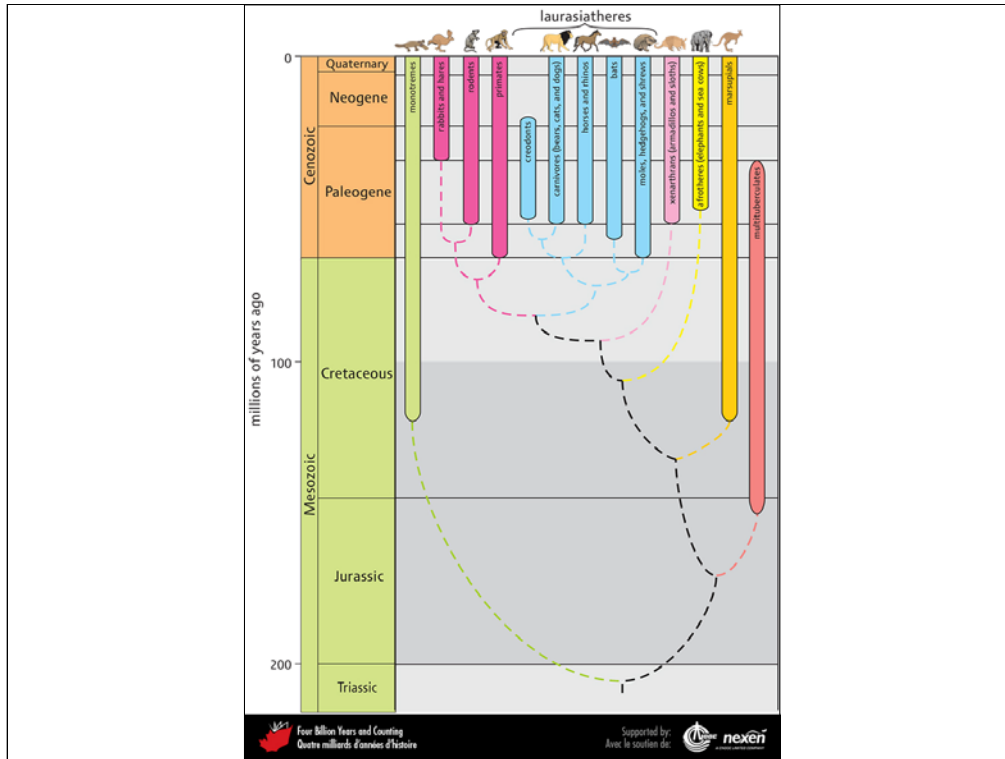
BOX 8

All photographic and graphic images (henceforth referred to as images) posted on this site are copyright of the persons and/or institutions indicated in the caption directly associated with each image. The copyright holders have agreed that you may use their images for educational, non-commercial purposes only and provided that they are credited in each instance of use. For all other uses you must contact the copyright holder.



A Permian scene from Prince Edward Island, showing a group of *Bathynathus* (possibly equivalent to the more famous *Dimetrodon*, or at least a close cousin) prowling among cycads, with copses of small horsetail trees in the background. PAINTING BY JUDI PENNANEN, COURTESY OF THE NEW BRUNSWICK MUSEUM.

All photographic and graphic images (henceforth referred to as images) posted on this site are copyright of the persons and/or institutions indicated in the caption directly associated with each image. The copyright holders have agreed that you may use their images for educational, non-commercial purposes only and provided that they are credited in each instance of use. For all other uses you must contact the copyright holder.



Evolutionary relationships and the timing of first appearances and ranges of the main groups of mammals. Probable inter-relationships are shown by the dashed lines.

All photographic and graphic images (henceforth referred to as images) posted on this site are copyright of the persons and/or institutions indicated in the caption directly associated with each image. The copyright holders have agreed that you may use their images for educational, non-commercial purposes only and provided that they are credited in each instance of use. For all other uses you must contact the copyright holder.



Scene from Beringia during the last interglaciation (Chapter 11) depicting a faceoff between a peccary (a laurasiatherian, with Eurasian ancestry) and giant ground sloth (a xenarthran, with South American ancestry). In the background is a mammoth (an afrotherian, with African antecedents) and two camels (laurasiatherians). *BERINGIA INTERGLACIAL PERIOD*, COPYRIGHT GOVERNMENT OF YUKON / ARTIST GEORGE "RINALDINO" TEICHMANN 2001.

All photographic and graphic images (henceforth referred to as images) posted on this site are copyright of the persons and/or institutions indicated in the caption directly associated with each image. The copyright holders have agreed that you may use their images for educational, non-commercial purposes only and provided that they are credited in each instance of use. For all other uses you must contact the copyright holder.